

BelAire Installation Guide

Important:

Please Read carefully through this installation guide prior to starting the setting out of your new wall. Setting out the wall accurately and correctly will be the difference between good and a great result.

BelAire[®]
DESIGNER FENCING



Defining your space

Design Versatility | Built to Last | Noise Barrier | Easy Construction

Introduction

Thank you for choosing one of our quality products. We are the industry leaders in solid walls and fences! This product will provide you with years of trouble free protection if installed in accordance with these directions.

The recommendations detailed in this guide produced by BelAire are formulated along the lines of good building practice. They are not intended to be an exhaustive statement of all the relevant data. Further, as the success of projects depend on factors outside the control of BelAire (e.g. quality of workmanship, particular design, detail requirements, etc), BelAire accepts no responsibility for, or in connection with, the quality of the projects or their suitability when completed.

If you are in any doubt please seek independent advice or contact BelAire .

We are always happy and available to answer questions regarding installation no matter how small or insignificant you think they may be.

Technical and installation advice is available on ph: 0800 235 2473

IMPORTANT

It is recommended the reader pays particular attention to items identified as **IMPORTANT** in this manual to ensure a satisfactory installation and the long term performance of the products.



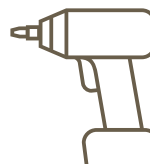
Tools Needed:



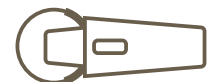
Square



Hex Driver Bit



Drill/Driver



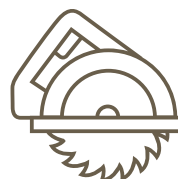
Angle Grinder



Spirit Level



Line Marking Paint



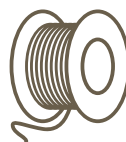
Circular Saw



Caulking Gun



Shovel



String Line



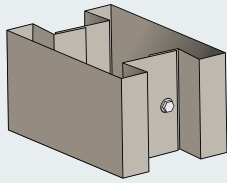
Post Hole Digger



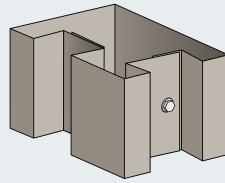
Tape Measure

Components List

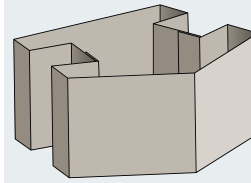
1. Mid Post



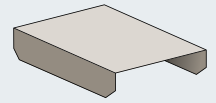
2. 90° Post



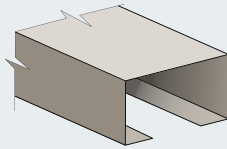
3. 45° Post



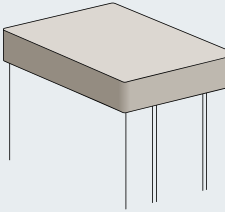
4. Flush Post Top



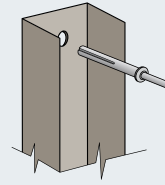
5. External Panel Capping



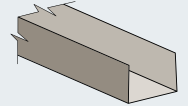
6. External Post Top



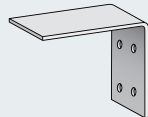
7. Wall Mount Channel & Masonry Anchor



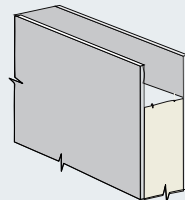
8. Capping Channel



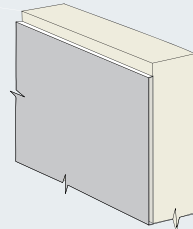
9. Support Bracket



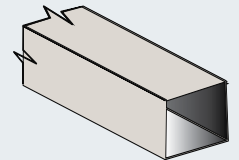
10. Signature & Estate Wall Panel



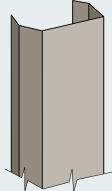
11. Classic Wall Panel



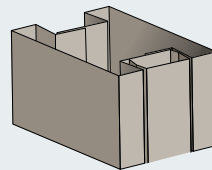
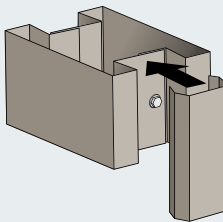
12. Aluminium Joiner



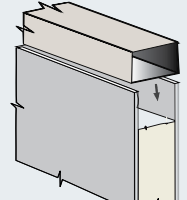
13. End Post Infill



End Post with End Post infill



Wall Panel & Joiner for Signature and Estate walls only



Post Installation



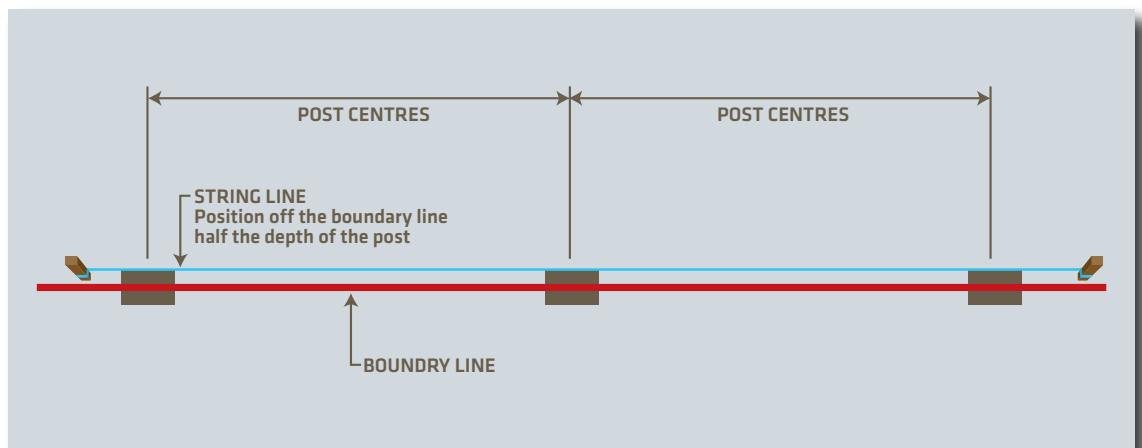
STEP 1 – Determine Boundary line, Posthole depths & Centers

Please read the wind region and post hole depth charts carefully prior to starting your installation.

We recommend you plan your wall set out/post position on a piece of paper first to save unnecessary digging.

Accurately determine the boundary line to where the wall will be installed, (in some cases a surveyor may be required) mark this with a string line as per the diagram below.

Note – The diagram below is for reference purposes only & shows the wall splitting the boundary line, this is may not always be the case depending on your individual circumstances.



Determine your posthole centres using the table below as a guide and mark out your posthole positions on the ground with line marking paint.

Note: Wall panels may be trimmed with a circular saw if necessary to fit in within an exact measurement (panel cutting procedure is detailed later in this guide)

Postholes can be dug by hand or with a mechanical auger. Use the Footing depth table on page 5 to determine your posthole depth and diameter.

Recommended footing depths listed here are for wind regions A & B plus terrain categories 2.0, 2.5 & 3. If you are building your wall in a Cyclonic wind area, on the top of a hill, adjacent to an escarpment, on a ridge, or in terrain category 1, you will need engineering advice beyond the scope of this publication.



Post Installation

Standard 'Post Centre to Post Centre' guide

The table below allows you to work out what your post centres will be. Example - If you have a 2400mm panel and you are using Classic posts then you will have a 2530mm post centre to post centre measurement. If you have a 2400mm panel and you are using Signature posts then you will have a 2630mm post centre to post centre measurement.

Wall Panel Length	Classic (50mm) Post hole Centres	Signature (70mm) Post hole Centres	Estate (70mm) Post hole Centres
2400mm	2530mm	2630mm	2680mm
2700mm	2830mm	2930mm	2980mm
3000mm	N/A	3230mm	3280mm

Footing Depth Table

Wall Height	Hole Depth into firm earth or clay		Hole Depth into sand, soft clay or loose earth		Hole diameter
	Wind Region A&B	C	Wind Region A&B	C	For all Wind regions the Post Hole diameter should be your post width plus 100mm Classic = 280mm min Signature = 380mm min Estate = 420mm min
900mm	450mm	 IMPORTANT BEFORE YOU CONTINUE You will need engineering advice beyond the scope of this publication. Please contact BelAire directly for this information.	550mm	 IMPORTANT BEFORE YOU CONTINUE You will need engineering advice beyond the scope of this publication. Please contact BelAire directly for this information.	
1200mm	550mm		650mm		
1500mm	600mm		700mm		
1800mm	650mm		800mm		
2100mm	700mm		900mm		
2400mm	800mm		1000mm		
2700mm	900mm		1100mm		
3000mm*	1000mm		1200mm		

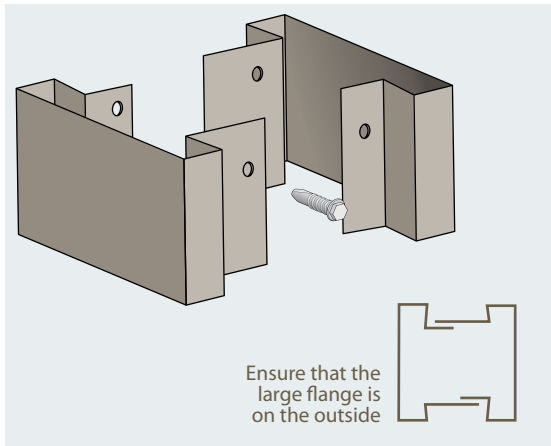
* 3000mm high walls may not be suitable for all regions. Please consult BelAire prior to the design stage so we can ascertain if additional materials are required example – Shortened free end spacing's, deeper footings, core filling of posts etc.

Post Installation

STEP 2 – Screw posts together

Place the two halves of the post on a FLAT surface. Align the pre-punched holes in the post exactly (large flange on top) and clamp both ends together – see picture.

IMPORTANT: Screw both ends together first then fasten one screw in the middle (with supplied Hex head screws). The remaining screws can be fixed in any order.



Post Installation

STEP 3 – Fixing the base brackets to the post

Attach the panel support bracket into the post with the hex head screws supplied.

The measurement from the top of the post will vary depending if you have Flush or External (standard) Post Tops and also depends on whether you have a BelAire Classic, Signature or Estate Wall.

External Post Tops (Standard)

The support bracket should be fixed at 25 mm more than the finished wall height.

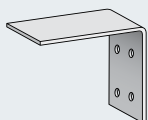
Example: for an 1800mm high wall the bracket should be fixed at 1825mm from the top of the post. This allows 25mm for the post top to sleeve over the post after the panels have been installed. Please Note: if you choose to have the exposed join you will have to add 14mm to get the required bracket height. (see table below)

Flush Post Tops

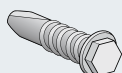
The support bracket should be fixed at 5 mm more than the finished wall height.

Example: for an 1800mm high standard join wall the bracket should be fixed at 1803mm from the top of the post, if it is a exposed join wall the bracket should be fixed at 1817mm. This 3mm is to allow for the thickness of the top wall capping and base channel on top of the panel measurements.

Support Bracket



Tek Screw



Note: If your wall is stepped please see Instructions on how to Step Your Wall on page 17 before fixing your brackets.



*The Exposed join is only available on the Signature and the Estate walls.

Classic Wall Support Bracket Fixing heights

Finished Wall Heights (mm)	905	1205	1505	1805	2105
External Post capping	930	1230	1530	1830	2130
Flush Post Capping	910	1210	1510	1810	2110

Signature and Estate Wall Support Bracket Fixing Heights heights

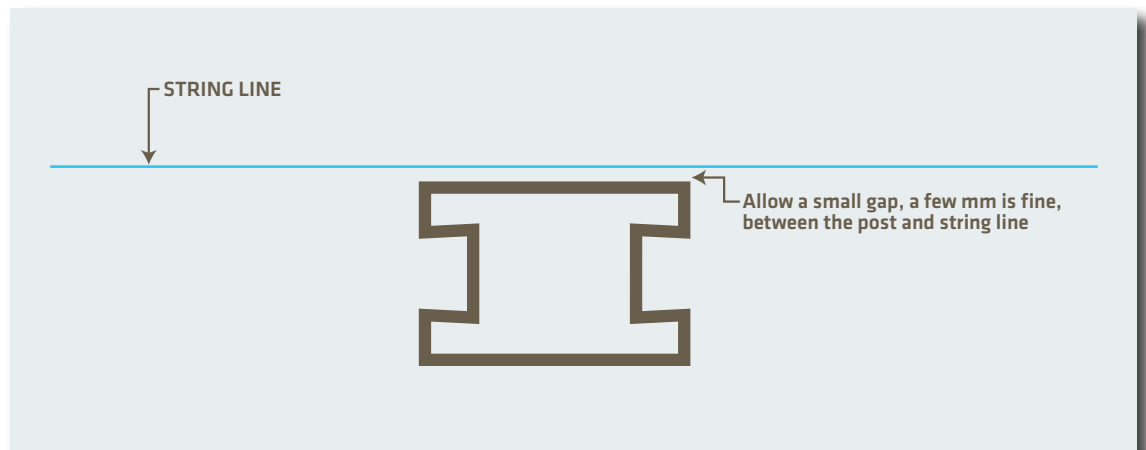
Finished Wall Heights (mm)	900	1200	1500	1800	2100
Standard Join	925	1225	1525	1825	2125
Exposed Join*	N/A	N/A	1539	1839	2139
Flussh Capping*	If you have a wall with Flush Capping, Take 22mm off the above Heights				
Suggested Cleat Height for your new wall	mm				

Post Installation

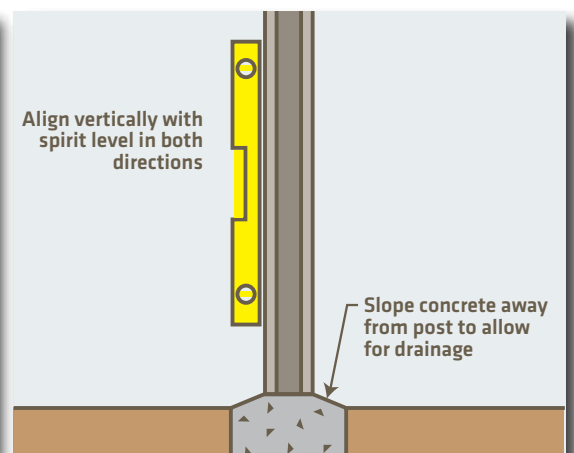
STEP 4 – Post fitment and alignment

Working to a string line on the face of the post, insert the first post into the hole and gradually pour in the concrete. Continually check the post alignment with a spirit level as the concrete is being poured.

Your string line should have a small amount of clearance between it and your post. If you have your string line always touching the post you can risk pushing it slightly every time and the result will be an 'arc' in the line of the wall.



We recommend mixed concrete as it is a lot easier to work with and gives you more time..



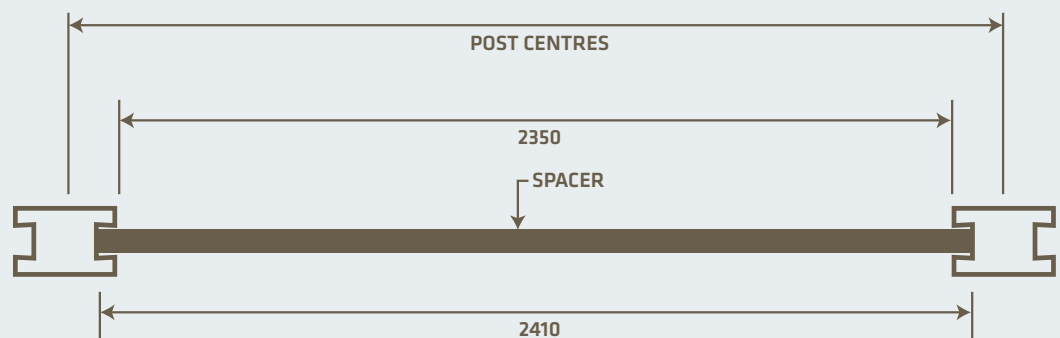
Post Installation

STEP 5 – Spacing your Posts correctly

We recommend you cut a suitable spacer (timber or steel) to press against the back of the post rebate. This distance should be the panel length you are installing + 10mm.

Example: If the wall panel being inserted is 2400mm in length then the distance between the two rebates should be 2410mm. This will then accurately give you the correct spacing plus a surface to get a level from (providing the spacer you are using is straight & true).

Alternatively you can use a tape measure between the face of the posts and use something rigid to sit across the top of the posts to sit the spirit level on.



This example is based on a 2400mm panel being installed

Panel Installation

Allow concrete to cure completely before further assembly

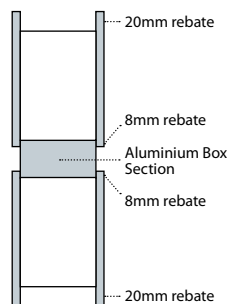
Closed Join or Exposed Join ? If you have a Classic wall go to step 6.

The idea of a exposed join is for a shadow line, when the sun is directly above the wall the shadow will be cast into the exposed join but with the closed join the shadow line will be seen in diferent sunlights.

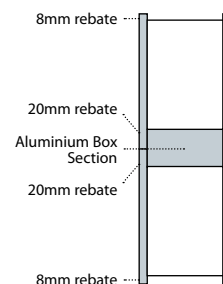
We reccomend having a exposed join for better apperance!



*The Exposed join is only available on the Signature and the Estate wall, Refer to the standard join details for the Classic wall.



<< How to achieve an exposed join
Insert the aluminium box section into the 8mm rebate in the panels



How to achieve >> a standard joint
Insert the aluminium box section into the 20mm rebate in the panels

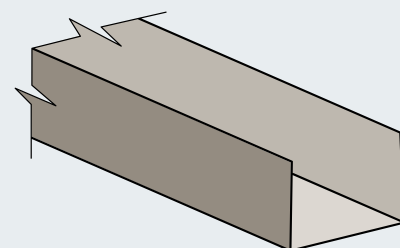
STEP 6 – Fitting the capping channel to the panel

The capping channel will be slightly shorter than the panel to allow it to be guided down the post easily so it does not collide with the heads of the tek screws.

Start at one end of the panel, approx 5mm in and carefully ease the capping channel over the panel. Once fitted, tap the capping channel to make sure it is seated correctly.



Capping Channel



Panel Installation

STEP 7 – Inserting wall panels

Make sure the base bracket is free of debris. Then with one person at either end, lift the panel vertically and insert into the top rebates of the post.

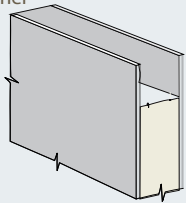
The first panel will have the capping channel installed so the initial 25mm will be tight to insert as the post is trying to 'stretch' to accommodate the panel plus the capping channel, this is normal.

If you feel it is too tight to insert you can remove the top tek screw which will allow the post to expand more readily. Be sure to re install the tek screw prior to inserting the top panel.

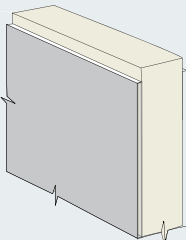
Note: The panel must be guided down at an even & level rate or it will jam.

IMPORTANT: Always take special care if working from heights or lifting objects above your head.

Signature and Estate Wall Panel



Classic Wall Panel



If your wall is 1200mm high or lower go straight to Step 10

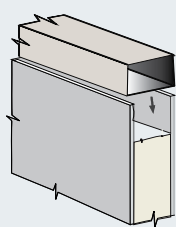
you won't have to 'double stack' panels

Panel Installation

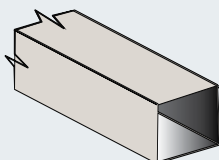
STEP 8 – Insert The Joiner

If you have a Classic wall go to step 9
Insert the 60 x 30mm Aluminium joiner into the bottom panel making sure it is seated all the way down.

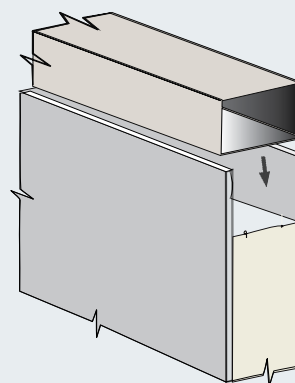
Wall Panel & Joiner



12. Aluminium Joiner



Wall Panel & Joiner



STEP 9 – Inserting consecutive panels

Guide the second panel down on top of the base panel.

Note: If it does not align correctly with light downward pressure it may be necessary to 'Tap' the top panel down using a heavy block of wood in a 'pivoted slapping action' to bring it together completely, see picture below.



Capping Installation

STEP 10 – Fitting the top wall capping

There are two types of panel capping options - You will have either have External Panel Capping (standard) or a Capping Channel to give a flush finish look.

Both procedures are outlined below.

External Panel Capping (standard)

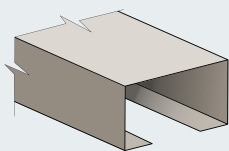
Firstly determine the correct length for your cap and then cut to suit gap

Apply 'liquid nails fast grab' or similar every 250mm.

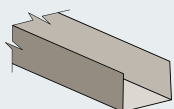
Note: The adhesive must be water based or it will melt into the polystyrene

Ease the wall capping over the panel starting at one end and press down (see picture below). Once set, the liquid nails will stop any unwanted movement.

External Panel Capping



Capping Channel



Capping Channel

Apply 'liquid nails fast grab' or similar every 250 mm along both internal radiuses. This adhesive will contact with the fibre cement sheets once the channel is installed.

Start at one end approx 5mm in and carefully guide the capping channel over the panel. Once fitted, tap the capping channel to make sure it is seated correctly.



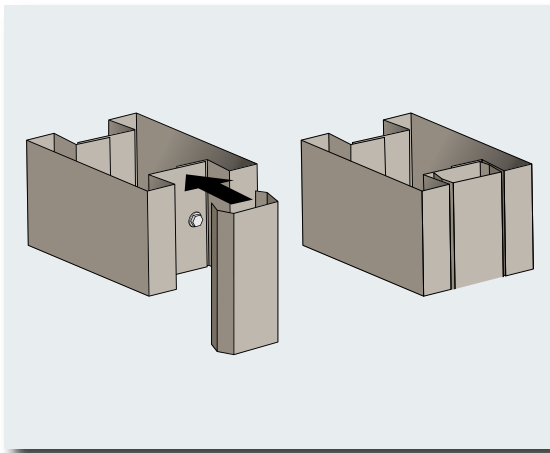
Capping Installation

STEP 11 – End Post infills

To fill the recess in a post where you are not inserting a panel, snap in an end post infill.

Note: These are designed to be inserted with a small amount of force.

Where your wall is stepped, this insert can be cut to size to suit the step and inserted in the exposed recess.



Capping Installation

STEP 12 – Fitting the Post Tops

There are two types of Post Top options – You will have either have External Post Top (standard) or, to give a flush finish look you will use a Flush Post Top.

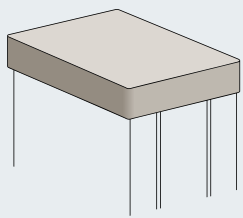
Both procedures are outlined below.

External Post Top

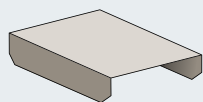
Apply liquid nails to all four internal walls of the post top. Sleeve the post top over the post and seat down by hand then level the post top.

Note: It may be necessary in some cases to place a small packer in-between the top and the post to hold the top level until the liquid nails dries.

External Post Top



Flush Post Top



Flush Post Top

Apply a small amount of sealant or liquid nails to the sides of the flush post top before pushing it into place, wipe away any excess. Push the flush post top into the post and tap it down lightly to seat it.

Note: You may have to squeeze the sides of the flush post top to start it into the post

Seal around the post top with an exterior (paintable) polyurethane sealant prior to painting (Sika flex pro is recommended). This will provide a water tight seal and prevent the top from lifting with expansion and contraction.



Finished sealed and painted

Additional Information

Stepping or Raking your wall

This will generally be the most complex part of any installation. Please take the time to draw it out on a piece of paper before setting any posts in the ground. Having to remove posts that are concreted in can be very disheartening! And remember we are always here to help you get it right so if you are unsure please ask.

There are three methods for dealing with sloping ground. The examples below are based around an 1800mm high wall.



Method 1 – Stepping the bottom of your panels & maintaining a minimum 1800mm wall height.

Note - This will leave a void/gap under one end of your wall panels.

Method 2 – Raking/cutting the base panel & maintaining a maximum 1800mm wall height.

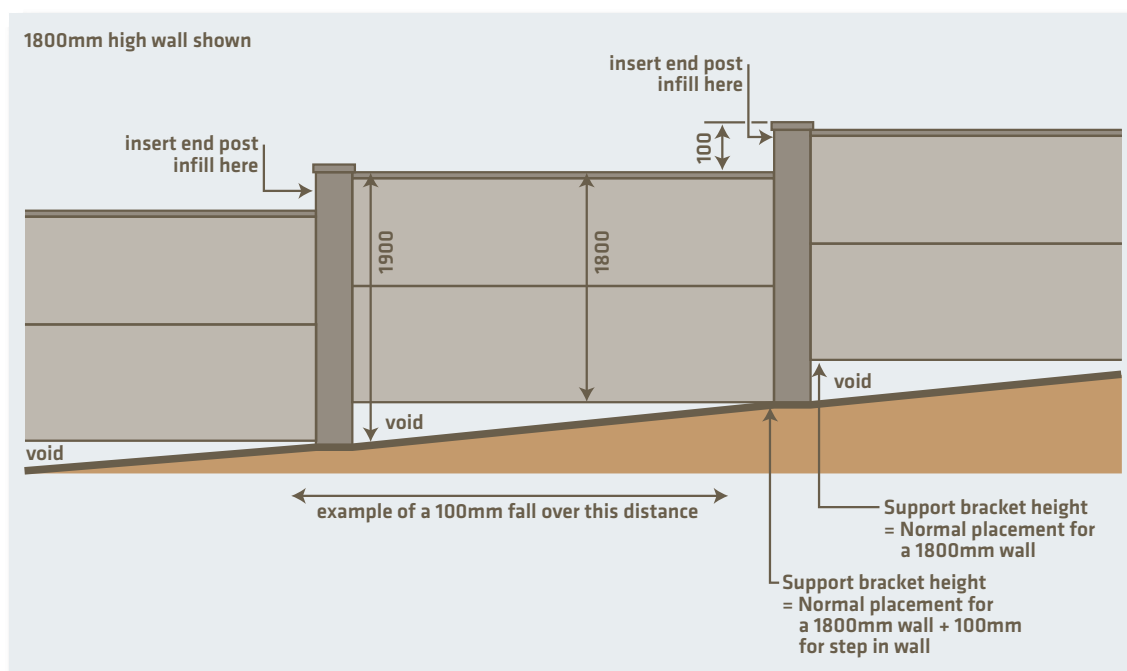
Note - This will leave no void/gap under your wall panels but will reduce your wall height at one end.

Method 3 – Raking/cutting the base & maintaining a minimum 1800mm wall height at one end and a taller wall height at the low end of the slope.

Note - This will leave no void/gap under your wall panels but will increase your wall height at the lower end of the slope above 1800mm. A wider base panel is required for this method and as such should be a consideration at the time of ordering.

Stepping Method 1 – Maintaining a minimum 1800mm wall height

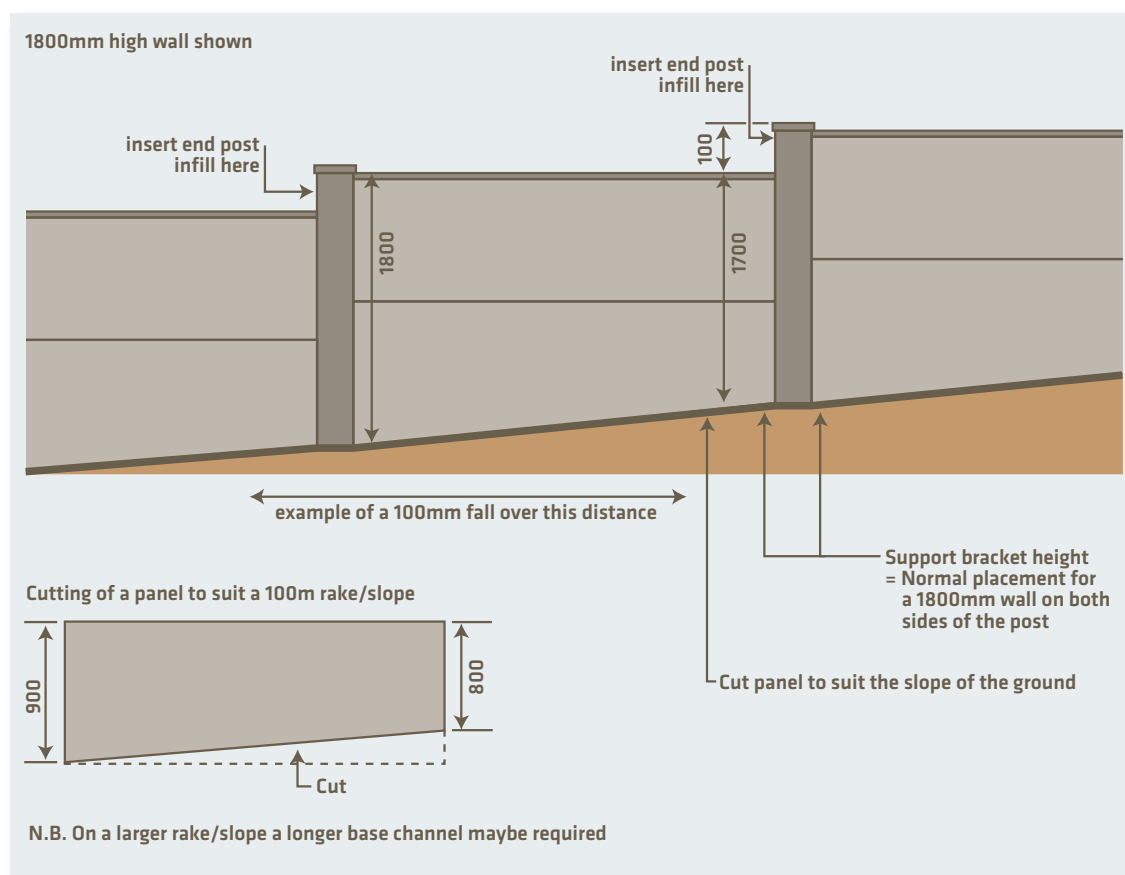
As pictured below it should be noted that you will be left with a void at the low end of the slope but you will maintain a minimum 1800 mm wall height. In most cases on gradual slopes this void won't be large and can either be left as is or planted in front of.



Additional Information

Stepping Method 2 – Rake/Cut your bottom panel to the slope using 1800mm worth of wall panels

You will maintain a maximum height of 1800mm wall height – As pictured below it should be noted that your wall height at the high side of the slope will be reduced by the amount of the rake – in this situation 100mm.

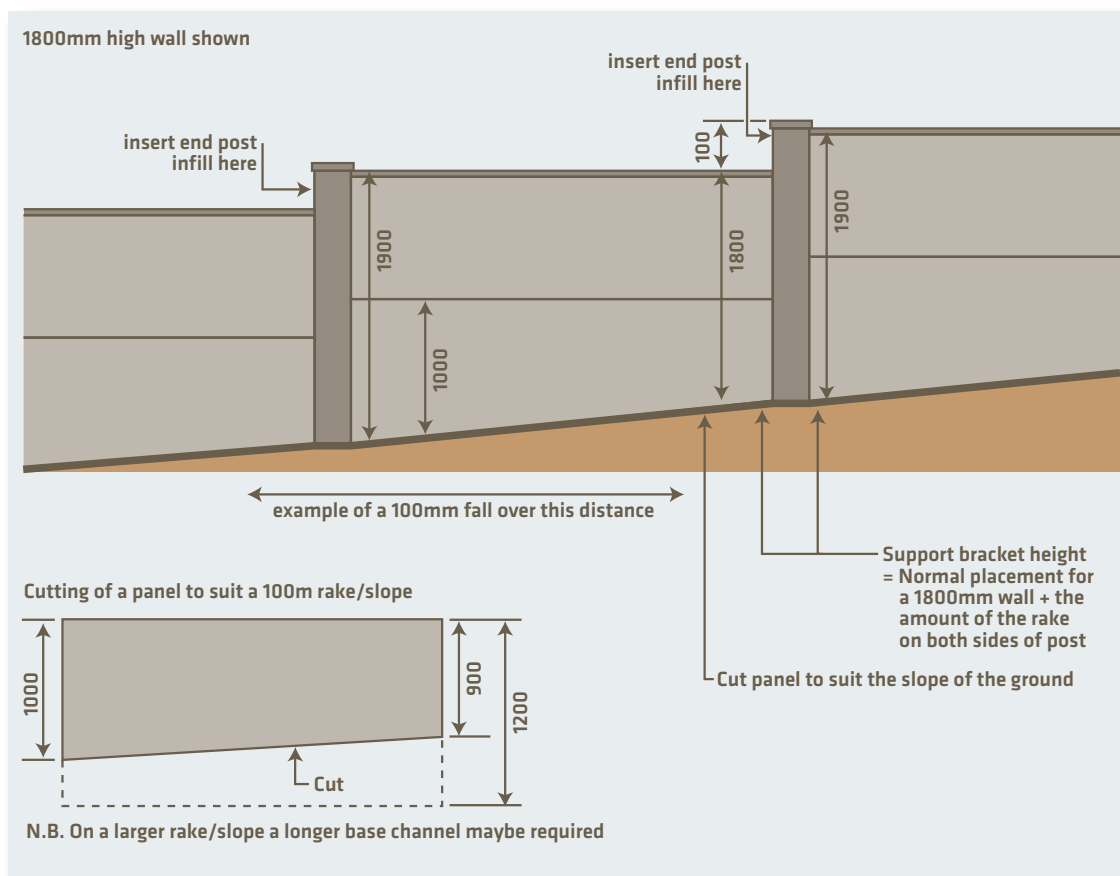


Additional Information

Stepping Method 3 – Rake/Cut your bottom panel to the slope using 2100mm worth of wall panels to maintain a minimum 1800mm wall height.

You will maintain a maximum height of 1800mm wall height – As pictured below it should be noted that your wall height at the high side of the slope will be increased by the amount of the rake – in this situation 100mm.

Depending on the additional height gained by doing this you may require deeper footings and longer posts. Please contact us for specific advice before installation.



Additional Information

Cutting the panels:

STOP – Wear the appropriate safety equipment for performing the task. Eye wear, hearing protection & a dust mask.

The panels can be cut using a circular saw with a timber blade. Remember to always support or catch the piece you're cutting off as it may break towards the end of your cut if you don't.

Note - If your circular saw doesn't have a deep enough blade to cut through the panel in one sweep then you must cut through one face and carefully turn the panel over and cut through the other.

The panel should go 25mm into the rebate of each post.

Example: If the distance between the internal face of posts is 2000mm then the panel should be cut at 2050mm.



Cutting the posts:

STOP – Wear the appropriate safety equipment for performing the task such as, eye wear, hearing protection & a dust mask.

Mark the post and use a 5 inch/125mm angle grinder with a 1mm cutting blade to cut through the post. A smaller grinder (4 inch/100mm) can be used but you will find it difficult to get the blade depth required when cutting through the rebate in the post that accepts the panel.

Note: All cut edges that will remain exposed to the elements will require treating with a zinc rich paint such as 'cold gal' or similar.



Additional Information

Post extensions: For all walls where extra post length is required

Examples: Unstable ground, gate support posts or wind region C etc

Where a post extension is required the 2 halves must be flexed open and sleeved over the exterior of the post base by 200mm minimum, then fastened with the supplied tek screws at a minimum 100mm spacings along the flange edges (see picture below).

We recommend digging your hole first, then measuring the depth of the hole and sleeving the post extension onto the base of the post to suit the hole depth.

Before panel insertion the post must be core filled with concrete to cover the post extension internally.

Note: The pictures below are only showing one half of the post extension being fitted, the post should be turned over and the other half fitted also.

The 2 halves of the post extension will not quite meet in the middle of the post, this is to allow a small amount of concrete to enter the centre of the post before actual core filling.



Exterior Paint Application

Painting your wall

IMPORTANT: Please make sure you do not carry out any painting on your new wall until wall is completely dry!! if the wall is not completely dry you will have a risk of mould growth, you should wait a minimum of 36 hours for the wall to completely dry from any rain.

We recommend that you use Dulux Weather Shield x10 or Dulux Timbercryll or a similar self priming premium brand of exterior grade paint. A base primer is not required as long as the paint being applied is self priming and suitable for untreated fibre cement/masonry substrates.

Dulux product spec pages:

<http://www.duspec.co.nz/duspec/file/NZDD1268.pdf>

or

<http://www.duspec.co.nz/duspec/file/NZDD0789.pdf>

Surface Preparation – Posts, Trims & Post Tops

The metal surfaces to be painted must be clean, dry and free of contaminants.

Lightly scuff/rub down all Metal and Primed components with a 3M Scotch Brite pad prior to the application of paint. Scotch Brite pads are available from most paint stores.

NOTE: The light key this gives won't be visible but it is effective!

Surface Preparation – Panels

Prepare the surface by ensuring that the Fibre Cement Panels are clean, dry and free of contaminants. This can be achieved by means of a brush down with a stiff brush or rubbing lightly with a 'Scotch Brite' pad.

Application Procedure

Two coats of paint are required.

We recommend applying the first coat with a roller. Cut in the sections that the roller missed with a brush prior to applying the second coat. Let the first 'cutting in' dry and apply a second 'cutting in' coat prior to the second and final roller coat.

On a large job a spray application may be justified. Please see the paint manufacturer for advice on spray application.

We recommend you paint your wall within 90 days of installation.



Sand Finish Paint Application

How to achieve a cost effective Tuscan style rendered look:

As this is generally the first time most people have applied this type of finish it is highly recommended that you follow the procedure below exactly on a small test panel first before applying to your finished wall.



Never apply in direct sun light

Products

Base Coat – We use and recommend Dulux Acra Sand texture paint. Acra Sand is available from Dulux trade stores only. Only a single base coat of this is required if overcoated with Dulux Weathershield (see top coat step below). If a different brand of sand based finish is selected (than specified above) please ensure that it is self-priming onto fibre cement/masonry surfaces. If it isn't then a base primer such as Dulux Acraprime will also be required.

NOTE: This base Acra Sand coat can (in most cases) be tinted to the colour of your final topcoat at the time of purchase.

Dulux product spec: <http://www.duspec.co.nz/duspec/file/NZDA0990.pdf>

Application Method



Top Coat – We use and recommend Dulux Weather Shield or a similar premium brand of exterior grade paint.

Surface Preparation – Posts, Trims & Post Tops

The metal surfaces to be painted must be clean, dry and free of contaminants. Lightly scuff/rub down all Metal and Primed components with a Scotch Brite pad prior to the application of paint. Scotch Brite pads are available from most paint stores.

Surface Preparation – Panels

Prepare the surface by ensuring that the Fibre Cement Panels are clean, dry and free of contaminants. This can be achieved by means of a brush down with a stiff brush or rubbing very lightly with a 'Scotch Brite' pad.

